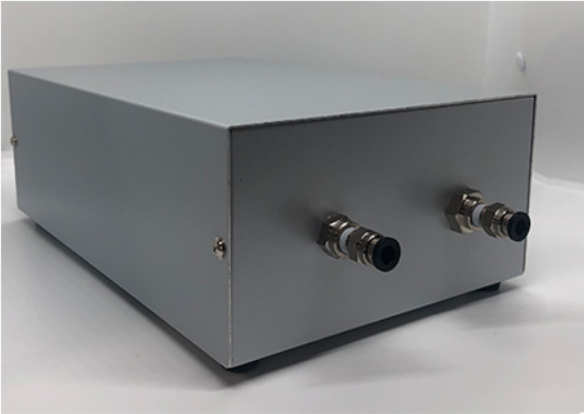




acniti LLC
1-2-9 Nyoidani
Minoh Osaka
562-0011
Japan

acniti

sample pump for sensors



sample pump for sensors

sampling pumps for ozone sensors and alt nanobubble sensor

- ✓ Sensor Sample pump for corrosion resistant models
- ✓ Use with ozone sensors
- ✓ Use with ALT nanobubble monitoring system

Acniti offers two sample pumps that work in combination with the ALT nanobubble sensor and the ozone water concentration sensors.

sensor sample pump corrosion resistant

| Description | | Metric | Imperial |
|-------------|--------------------------------|--|--|
| 1 | Model name | sensor sample pump corrosion resistant | sensor sample pump corrosion resistant |
| 2 | Model number | sensor_sample_pump_corrosive | sensor_sample_pump_corrosive |
| Liquid | | Metric | Imperial |
| 3 | water temperature minimum | 0 °C | 32 °F |
| 4 | water temperature maximum | 60 °C | 140 °F |
| 5 | Strainer availability and size | 2~5µm | 2~5µm |
| Ambient | | Metric | Imperial |
| 6 | Ambient temperature maximum | 40 °C | 104 °F |
| 7 | Relative humidity minimum | 0 % | 0 % |
| 8 | Relative humidity maximum | 85 % | 85 % |
| Gas | | Metric | Imperial |
| 9 | Gas quality | | |
| 10 | Gas remark | | |
| Electrical | | Metric | Imperial |
| 11 | Unit phase Ø voltage | 100V ~ 230V | 100V ~ 230V |
| 12 | Unit power consumption | 15 watts | 15 watts |
| 13 | Wetted parts | SUS304, FKM, PTFE, Silicon, | SUS304, FKM, PTFE, Silicon, |
| 14 | Pump model | | |
| 15 | Pump phase Ø voltage | | |

| | Electrical | Metric | Imperial |
|----|------------------------------|--------|----------|
| 16 | Pump phase Ø voltage 60Hz | | |
| 17 | Pump pressure setting | | |
| 18 | Control | | |
| | Connections | Metric | Imperial |
| 19 | Water inlet | 6mm | 6mm |
| 20 | Water outlet | 6mm | 6mm |
| 21 | Gas inlet | | |

sensor sample pump standard

| Description | | Metric | Imperial |
|-------------|--------------------------------|-------------------------------|-------------------------------|
| 1 | Model name | Sensor sample pump standard | Sensor sample pump standard |
| 2 | Model number | sensor_sample_pump_standard | sensor_sample_pump_standard |
| Liquid | | Metric | Imperial |
| 3 | Flow / minute | 0.3 Liter | 0.1 Gallon |
| 4 | Flow / hour | 18 Liter | 4.8 Gallon |
| 5 | Strainer availability and size | 2~5µm | 2~5µm |
| Gas | | Metric | Imperial |
| 6 | Gas quality | No corrosive gasses | No corrosive gasses |
| 7 | Gas remark | in stock | in stock |
| Electrical | | Metric | Imperial |
| 8 | Unit phase Ø voltage | 100V ~ 230V | 100V ~ 230V |
| 9 | Unit power consumption | 15 watts | 15 watts |
| 10 | Wetted parts | EPDM, Silicon, brass fittings | EPDM, Silicon, brass fittings |
| 11 | Pump model | | |
| 12 | Pump phase Ø voltage | | |
| 13 | Pump phase Ø voltage 60Hz | | |
| 14 | Pump pressure setting | | |
| 15 | Control | | |
| Connections | | Metric | Imperial |
| 16 | Water inlet | 6 mm | 6 mm |
| 17 | Water outlet | 6mm | 6mm |
| 18 | Gas inlet | | |